

SERVIZIO SANITARIO REGIONALE
EMILIA-ROMAGNA
Azienda Ospedaliera di Reggio Emilia
Arcispedale S. Maria Nuova

Istituto in tecnologie avanzate e modelli assistenziali in oncologia
Istituto di Ricovero e Cura a Carattere Scientifico

Azienda Ospedaliera S. Maria Nuova (ASMN)

Research Hospital (IRCCS) of Reggio Emilia

ORGANIZATIONAL STRUCTURE AND ORGANOGRAM



**AZIENDA OSPEDALIERA S. MARIA NUOVA (ASMN) –
RESEARCH HOSPITAL (IRCCS) OF REGGIO EMILIA:
ORGANIZATIONAL STRUCTURE AND ORGANOGRAM**

- 1384: General Hospital S.Maria Nuova of Reggio Emilia was founded.
- 1995: ASMN was separated from the Local Health Authority (AUSL of Reggio Emilia) and acknowledged as an independent Hospital Trust.
- In 2011, ASMN was acknowledged as Research Hospital (IRCCS) for Healthcare Protocols in Oncology.
- by the Italian Ministry of Health.

ASMN-IRCCS has 907 beds (923 during 2012):

- 803 inpatient beds
- 104 day care beds

215 of them refer to IRCCS and are devoted to oncological pathologies.

ASMN-IRCCS

- covers an area of 156,960 sqm
- has 8,900 biomedical devices for a total amount of €83.5 million

ASMN– IRCCS **Institutional Bodies** (Mandatory Bodies in accordance with the laws of the Italian IRCCS) are:

- **General Director**
- **Scientific Director**
- **Board of Directors** (called “Collegio di Direzione”). Made up of all the Heads of Departments ASMN-IRCCS, chaired by the Medical Director, has the task to advise and to make proposals to the General Director for the organization of activities of assistance, training, research and innovation.
- **Board of auditors** (called “Collegio sindacale”). It has the role of monitoring the policy of ASMN-IRCCS regarding economic, financial and equity issues.
- **Evaluation and Verification Board** (called “Comitato di Indirizzo e Verifica-CIV). Formed by 5 members (3 designed by the Regional Authority, 1 appointed Social-Health local Committee, and 1 by the Ministry of Health), it has the task of guiding and controlling the elaboration and implementation of the strategic guidelines of the IRCCS.

ASMN-IRCCS **Collegiate Bodies** are:

- **High Directorate** (composed of General Director, Scientific Director, Medical Director, Administrative Director, Nursing Director, Hospital’s Medical Director)
- **Ethics committee** (independent Body with functions expressing opinions of compliance with ethical and scientific principles about experimentation, innovative diagnostic and therapeutic protocols; each procedure involving the use of human tissue for scientific and ethical issues associated with scientific activities and welfare).
- **Voluntary Associations Committee** (called “Comitato Consultivo Misto”) made up of representatives of voluntary associations and of representative of the ASMN-IRCCS.
- **Scientific Advisory Board** (called “Comitato Tecnico-Scientifico-CTS”) provides advice and support to Scientific Director regarding scientific and technical research for the ASMN-IRCCS).

ORGANIZATION BASED ON DEPARTMENTS

The Departmental organization represents the organizational and management model embodying the involvement of health professionals in decision-making, according to their respective areas of responsibility. The Department is a coordination corporate structure, which stands at higher level than the unit and the division, as far as operational management is concerned. It consists of uniform structures (called "divisions" or "units") performing similar or complementary services (including organizational and functional structures) and pursuing common objectives. Therefore, divisions/units are mutually dependent, while keeping their autonomy and responsibility in particular as far as clinical care is concerned.

DEPARTMENTAL AGGREGATIONS

In ASMN-IRCCS, the Departments are the following:

- Emergency (provincial Department, refers both to ASMN-IRCCS and to the Local Health Authority)
- Diagnostic Imaging and Laboratory Medicine (provincial Department, refers both to ASMN-IRCCS and to the Local Health Authority)
- Obstetrics, Gynecology and Pediatrics
- Surgery
- Internal Medicine and specialties
- Cardiology, Thoracic and Vascular Surgery, Critical Care Medicine
- Neuromotor phisio-pathology
- Oncology and advanced technologies (Department of IRCCS)

THE RESEARCH HOSPITAL- IRCCS

The Research Hospital (IRCCS) for Advanced Technologies and clinical pathways in Oncology is:

- Integral part of ASMN Hospital and Emilia Romagna Health Service;
- Regional and National reference center for oncological healthcare and research, within the Italian Governmental network for Research Hospitals (IRCCS network).

IRCCS’s organogram is formed by High Directorate and by the following Directors (see axnex 1 and 2):

- 1 Operative Director:
- 1 Medical Director
- 1 Administrative Director
- 1 Nursing Director

Currently, the last 3 Directors of the above list correspond respectively to the Medical Director, Administrative Director and Nursing Director of the whole ASMN-IRCCS.

IRCCS’s global activities, including health care, research and educational activities take place within the following structures:

1. Department of Oncology and Advanced Technologies
2. Hospital Oncology network

3. Department “Infrastructure Research and Statistics”

1. Department of Oncology and Advanced Technologies puts together structures whose specific and prevailing mission is to treat oncological pathologies and the employ innovative technologies. The Department consists of the following Units/Divisions:

- Pathology
- Oncology
- Hematology
- Trasfusion Medicine
- Genetics Laboratory
- Laboratory of Molecular Biology
- Radiation Therapy
- Nuclear Medicine
- Medical Physics
- Gastroenterology and Digestive Endoscopy
- Cervical cancer screening unit
- Oncological Medicine

2. Hospital Oncology network consists of all divisions and units, which do not belong to the Oncology Department but which nevertheless treat cancer pathologies (all divisions with exception of the following disciplines):

- Cardiology and Intensive Coronary Care Unit
- Vascular Surgery
- Neonatology and Nest
- Pediatrics and Child Neuropsychiatry
- Emergency Medicine

The IRCCS has 215 beds (201 during 2012) in which cancer-affected patients are treated:

- 48 day care beds
- 167 overnight stays beds

3. Department “Infrastructure Research and Statistics” is the Department dedicated to support and develop research within the entire ASMN-IRCCS. It is made up of:

3 Divisions:

- Epidemiological Research
- Statistics and Quality of Clinical Trials
- Traslational research

Methodological, legal and administrative support and grants office, provided by various Departmental offices.

Location:

Viale Umberto I, n° 50, Reggio Emilia (Spallanzani Building):

- General Directorate
- Scientific Directorate
- Medical Directorate
- Administrative Directorate
- Department “Infrastructure Research and Statistics”

- Research Laboratories
- Various Divisions and Units of ASMN-IRCCS

- Oncology and Anticancer drugs Centralized Unit
- Medical Physics
- Cervical cancer screening unit

The attached map shows the different locations. (annex number 3).

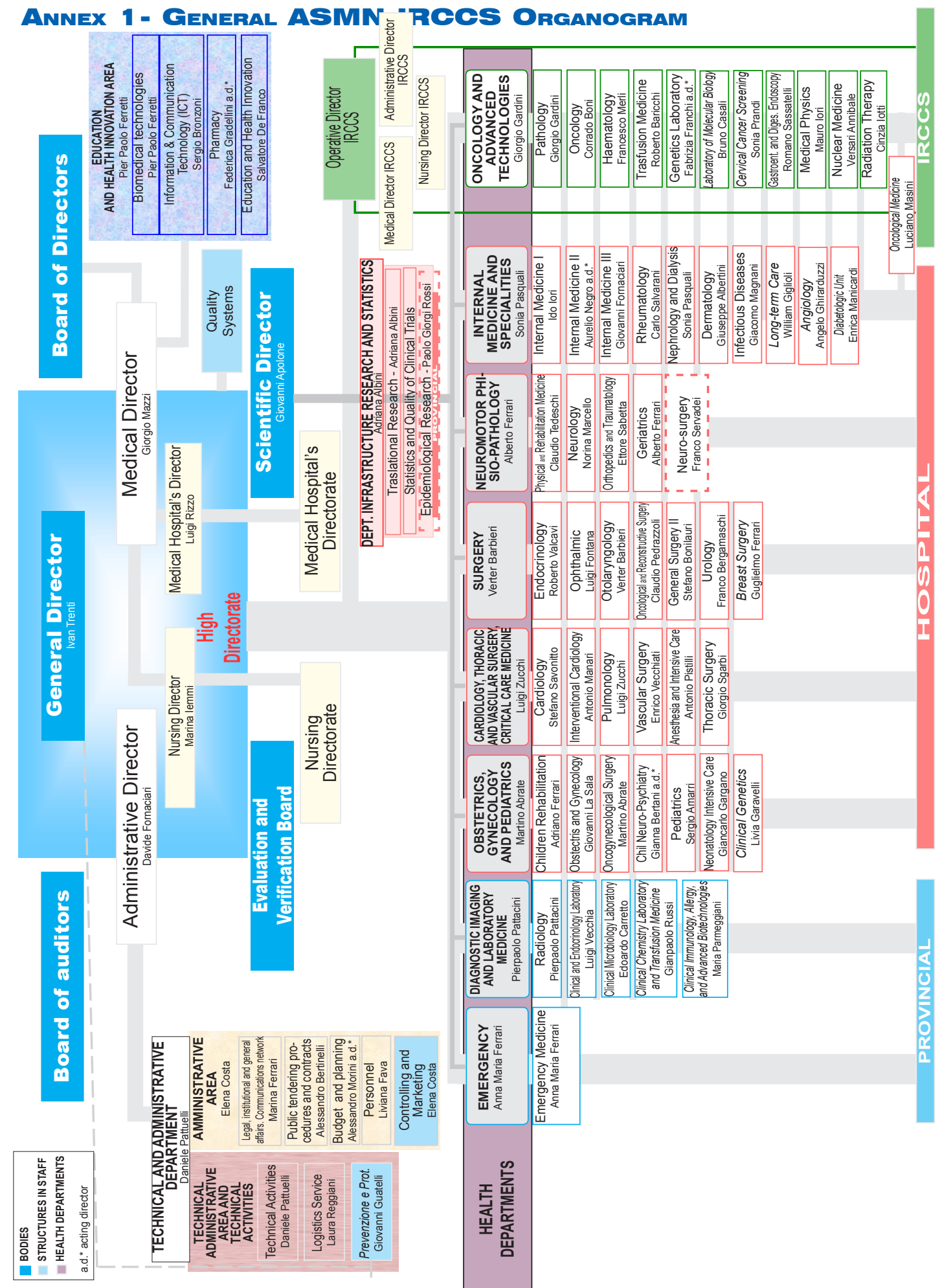
In the **2015** the CORE building (the new Reggio Emilia Onco-Haematological Hospital Building) will be inaugurated. It will embody divisions/services belonging to the Oncology Department but also divisions belonging to other Departments, which can be considered frame of reference for the cancer pathologies. Find herewith enclosed the rendering of building CORE (Annex number 4). This setting will concentrate most of structures of the Hospital dealing with the treatment and research oncological activities. The project will also ensure the availability of new and larger premises and will allow appropriate services.

Data source:

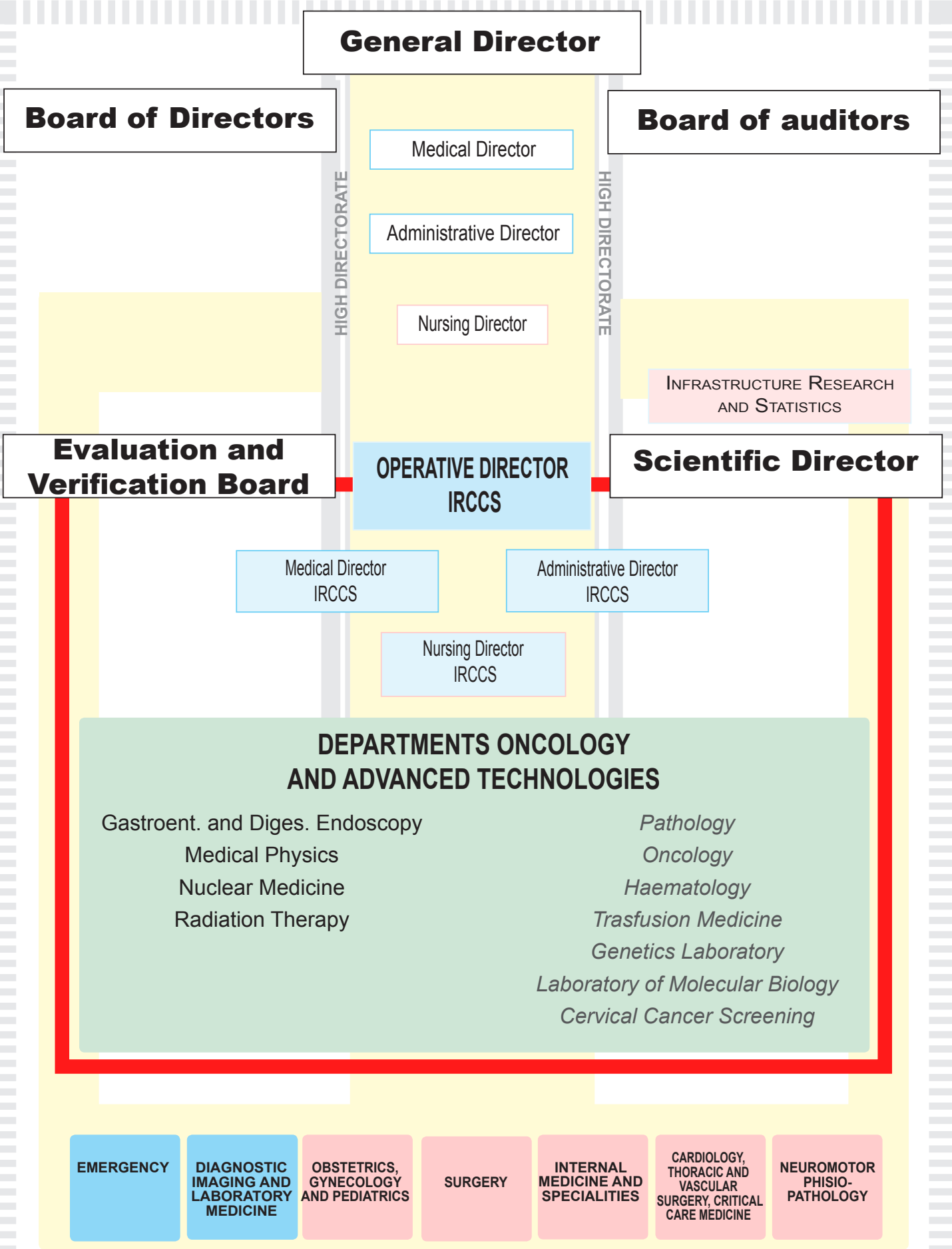
- Corporate ASMN-IRCCS Act (2012 update)
- IRCCS Statute (2012 update)
- 2012 Report of Department “Infrastructure Research and Statistics” activities
- “CORE” Building Project

Annex

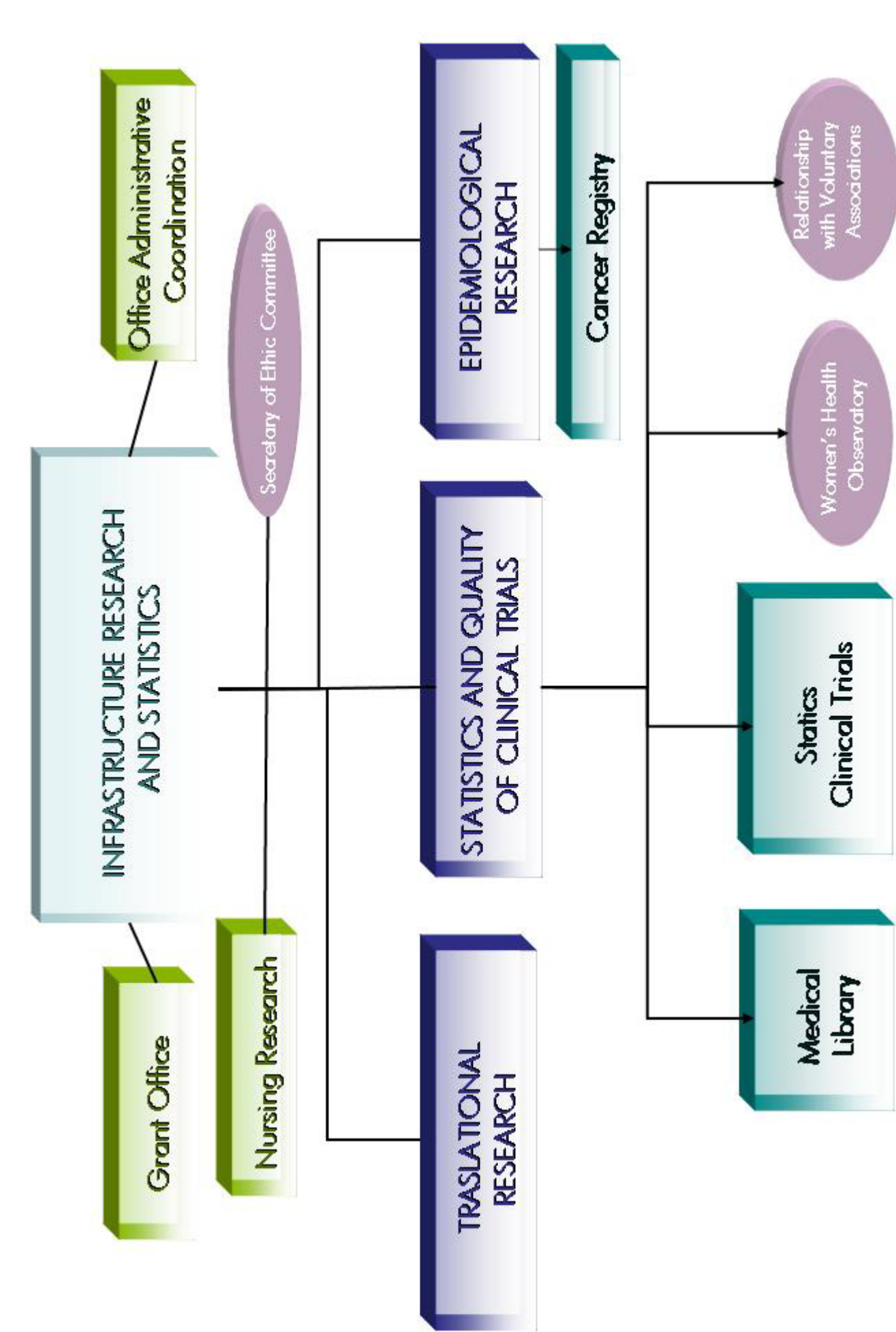
- 1- General ASMN-IRCCS Organogram
- 2- IRCCS Organogram and Department "Infrastructure Research and Statistics" organogram
- 3- ASMN-IRCCS present General map
- 4- CORE forthcoming location



ANNEX 2- IRCCS ORGANOGAM AND DEPARTMENT “INFRASTRUCTURE RESEARCH AND STATISTICS” ORGANOGAM



ORGANOGAM OF DEPARTMENT “INFRASTRUCTURE RESEARCH AND STATISTICS”



CORE forthcoming location

